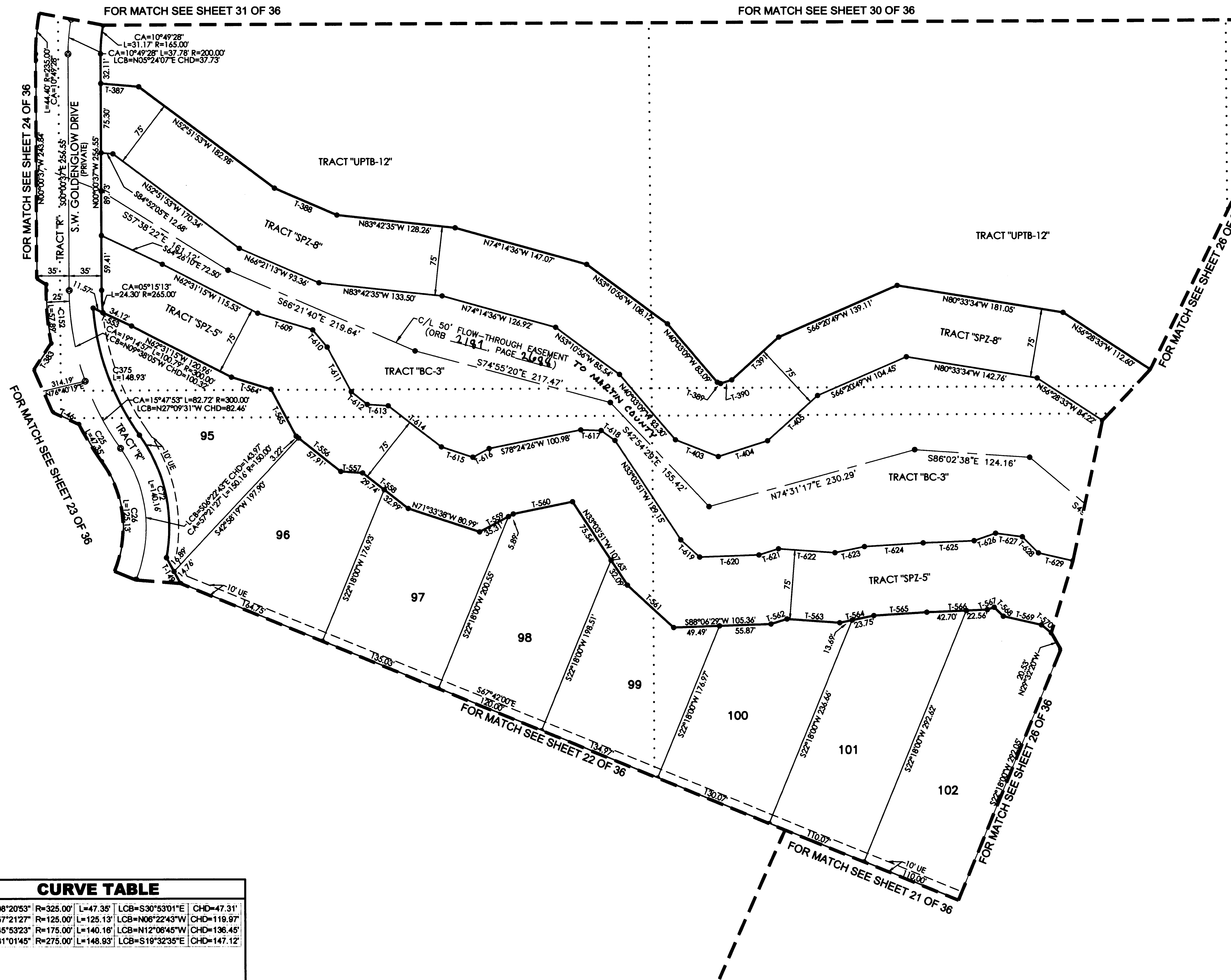
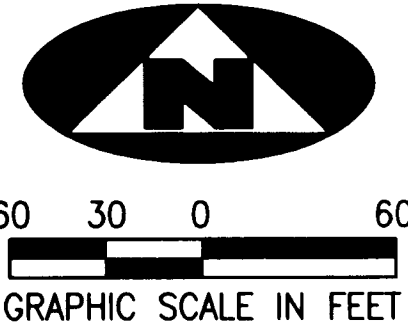


JULY 2006

TUSCAWILLA PUD

BEING A REPLAT OF A PORTION OF SECTIONS 14 AND 15, TOWNSHIP 38 SOUTH, RANGE 40 EAST, PALM CITY FARMS, RECORDED IN PLAT BOOK 6, PAGE 42, PUBLIC RECORDS PALM BEACH COUNTY (NOW MARTIN COUNTY), FLORIDA, AND BEING A PART OF SECTIONS 10 AND 11, TOWNSHIP 38 SOUTH, RANGE 40 EAST, MARTIN COUNTY, FLORIDA

SHEET 25 OF 36
PLAT BK 16 Pg 39



TANGENT TABLE

T-46	N65°01'07"W	31.00'
T-149	S28°26'02"E	31.65'
T-383	N33°13'40"E	34.38'
T-387	N84°52'05"W	50.98'
T-388	N66°21'13"W	73.04'
T-389	N68°15'44"W	3.87'
T-390	S72°18'59"W	12.77'
T-391	S47°36'24"W	69.04'
T-403	N68°15'44"W	49.61'
T-404	S72°18'59"W	56.07'
T-405	S47°36'24"W	73.07'
T-553	N64°26'10"W	45.69'
T-554	N72°42'48"W	44.70'
T-555	N27°50'32"W	57.96'
T-556	N50°46'13"W	61.13'
T-557	N84°09'45"W	23.53'
T-558	N51°47'03"W	62.73'
T-559	S61°52'08"W	41.20'
T-560	S78°24'26"W	65.17'
T-561	N47°18'25"W	67.67'
T-562	S72°19'21"W	17.96'
T-563	N85°45'05"W	56.79'
T-564	S78°17'40"W	37.45'
T-565	S86°33'59"W	57.25'
T-566	S87°38'09"W	65.25'
T-567	S71°00'53"W	7.95'
T-568	N44°42'23"W	13.78'
T-569	N77°03'42"W	42.21'
T-570	N50°33'09"W	13.66'
T-609	N72°42'48"W	61.92'
T-610	N39°41'14"W	24.24'
T-611	N27°50'32"W	54.99'
T-612	N50°46'13"W	21.99'
T-613	N86°09'45"W	22.80'
T-614	N51°47'03"W	72.86'
T-615	N71°33'38"W	35.64'
T-616	S61°52'08"W	19.83'
T-617	N88°09'14"W	21.89'
T-618	N53°27'32"W	18.41'
T-619	N47°18'25"W	27.55'
T-620	S88°04'29"W	64.22'
T-621	S72°19'21"W	22.09'
T-622	N85°45'05"W	60.81'
T-623	S78°17'40"W	32.36'
T-624	S86°33'59"W	63.38'
T-625	S87°38'09"W	55.00'
T-626	S71°00'53"W	24.52'
T-627	N82°09'41"W	29.03'
T-628	N44°42'23"W	24.60'
T-629	N77°03'42"W	38.12'

CURVE TABLE

C25	CA=08°20'53"	R=325.00'	L=47.35'	LCB=S30°53'01"E	CHD=47.31'
C26	CA=57°21'27"	R=125.00'	L=125.13'	LCB=N06°22'43"W	CHD=119.97'
C72	CA=45°53'23"	R=175.00'	L=140.16'	LCB=N12°06'45"W	CHD=136.45'
C375	CA=31°01'45"	R=275.00'	L=148.93'	LCB=S19°32'35"E	CHD=147.12'

LEGEND

(R)	DENOTES A RADIAL LINE	R	DENOTES RADIUS DISTANCE	□	DENOTES A SET PERMANENT REFERENCE MONUMENT
C/L	DENOTES A CENTERLINE	L	DENOTES ARC LENGTH DISTANCE	4"x4"	CONCRETE MONUMENT WITH DISK (LB 7344)
DE	DENOTES A PRIVATE DRAINAGE EASEMENT	CA	DENOTES CENTRAL ANGLE	●	DENOTES A 5/8" IRON ROD AND CAP (LB 7344)
UE	DENOTES UTILITY EASEMENT	LCB	DENOTES LONG CHORD BEARING	⊙	DENOTES A SET PERMANENT CONTROL POINT
LSE	DENOTES LIFT STATION EASEMENT	CHD	DENOTES CHORD DISTANCE	⊕	CARRIAGE BOLT AND WASHER (LB 7344)
MCAE	DENOTES MARTIN COUNTY ACCESS EASEMENT	ORB	DENOTES OFFICIAL RECORDS BOOK	⊗	DENOTES A FOUND PERMANENT CONTROL POINT
FM	DENOTES FORCEMAIN EASEMENT	DENOTES TRACT LINE OF THE PLAT OF PALM CITY FARMS PLAT BOOK 6, PAGE 42.	⊙	CARRIAGE BOLT AND WASHER
LME	DENOTES LAKE MAINTENANCE EASEMENT				

SURVEYOR'S NOTES

1. THE BASE BEARING, AS SHOWN HEREON, IS N89°58'48"W ALONG THE SOUTHWEST CORNER OF THE SOUTHWEST ONE-QUARTER OF SECTION 15, TOWNSHIP 38 SOUTH, RANGE 40 EAST.
2. IN THOSE INSTANCES WHERE UTILITY OR DRAINAGE STRUCTURES ARE CONSTRUCTED IN CONFLICT WITH THE PLATTED PERMANENT CONTROL POINT POSITION STRADDLERS MONUMENTED AS PERMANENT CONTROL POINTS WILL BE SET TO REFERENCE THE PLATTED POSITION.
3. LINES THAT INTERSECT CURVES ARE RADIAL UNLESS OTHERWISE NOTED.
4. THIS INSTRUMENT WAS PREPARED BY WM. R. VAN CAMPEN, PROFESSIONAL SURVEYOR AND MAPPER NO. 2424, IN AND FOR THE OFFICES OF ASSOCIATED LAND SURVEYORS, INC., 4152 WEST BLUE HERON BOULEVARD, SUITE 121, RIVIERA BEACH, FLORIDA, 33404.



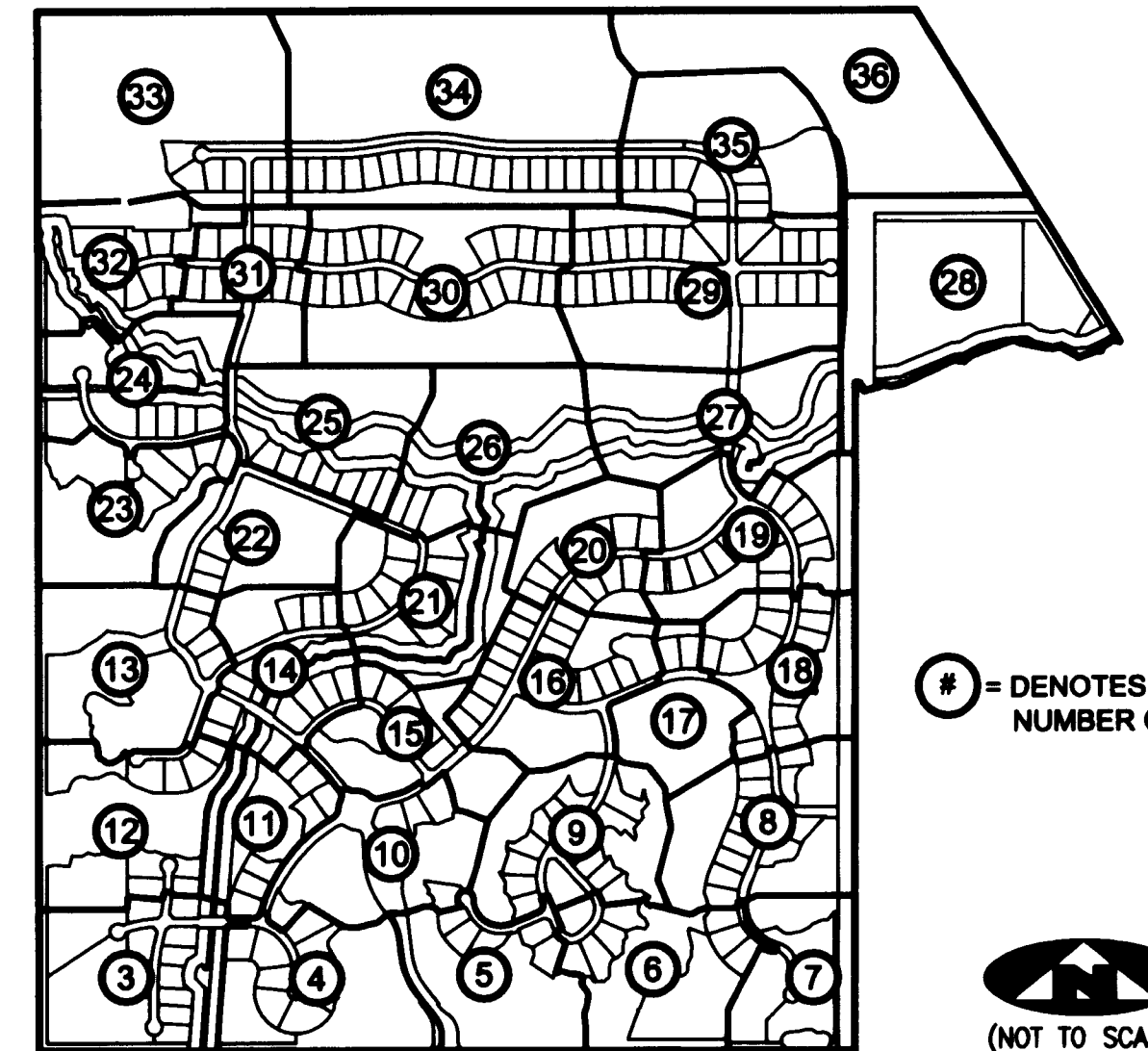
ASSOCIATED LAND SURVEYORS, INC.

4152 W. BLUE HERON BOULEVARD—SUITE 121
RIVIERA BEACH FLORIDA 33404 LB 7344
PHONE: (561) 848-2102 FAX: (561) 844-9659 EMAIL: ALLSURVEY@AOL.COM

FILE: P280PLAT

FB:	WO.NO.: P260
SCALE: 1"=60'	DATE: 1/8/2005
DWN: KVC	SHEET 25 OF 36

SHEET INDEX



4 = DENOTES SHEET NUMBER OF 36



(NOT TO SCALE)